



- 1723 Finished S.F.
- 880 Unfinished Basement
- 5 Bedroom
- 3 Bathroom
- Large Master Suite
- 2 or 3 Car Garage
- Covered Deck and Patio



Main Floor	1723 S.F.
Basement	880 S.F.
Total	2603 S.F.

PERRY HOMES

PERRY REALTY, INC.

Sales Team

(435) 251-9818

www.PerryHomesSouthernUtah.com

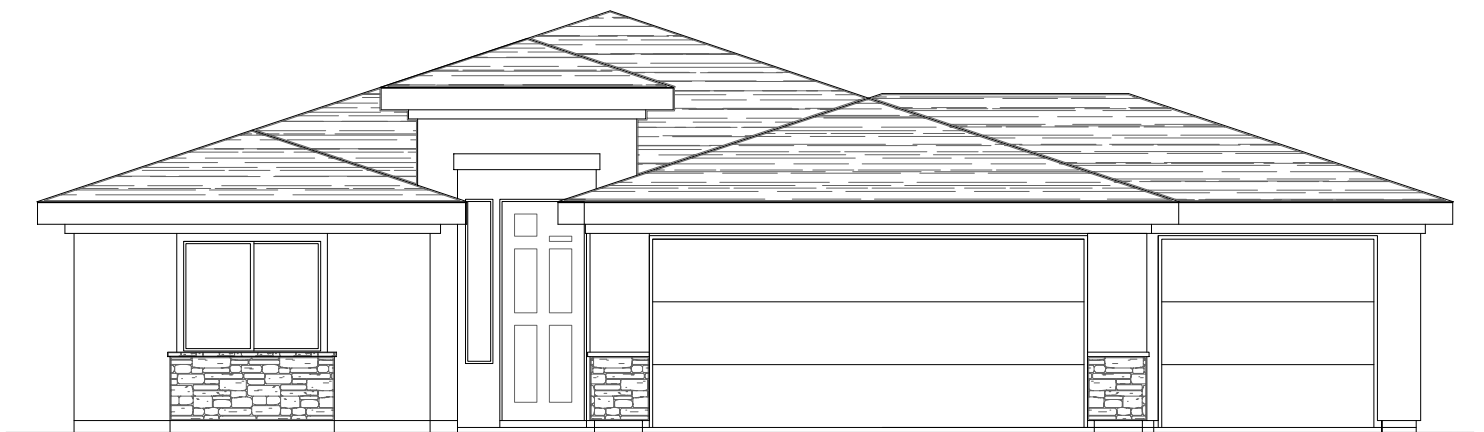
Some items shown are optional. At Perry Homes, continuing product improvement is an important policy. The Builder reserves the right to change plans, materials and policies without prior notice. Keep in mind that many items which you see in our model are decorator items only.

Homes are being marketed by Perry Realty, Inc. Copyright by Perry Homes Inc. No reproduction or other use of these plans may be made without the express written consent of the copyright holder. 12/16

QUARTZ B



QUARTZ II ELEVATION B



QUARTZ II ELEVATION C

PERRY REALTY, INC.

Sales Team

(435) 251-9818

www.PerryHomesSouthernUtah.com

PERRY  HOMES

Some items shown are optional. At Perry Homes, continuing product improvement is an important policy. The Builder reserves the right to change plans, materials and policies without prior notice. Keep in mind that many items which you see in our model are decorator items only.

Homes are being marketed by Perry Realty, Inc. Copyright by Perry Homes Inc. No reproduction or other use of these plans may be made without the express written consent of the copyright holder.